

A booming population

The City of Swan is a major growth region on Perth's eastern fringe. The City of Swan population forecast for 2022 is 167,763, and is forecast to grow to 309,788 by 2051.

Ellenbrook, 21km north east of Perth, has frequently been touted as one of Western Australia's fastest growing suburbs. The growth is expected to continue over the next decade too.

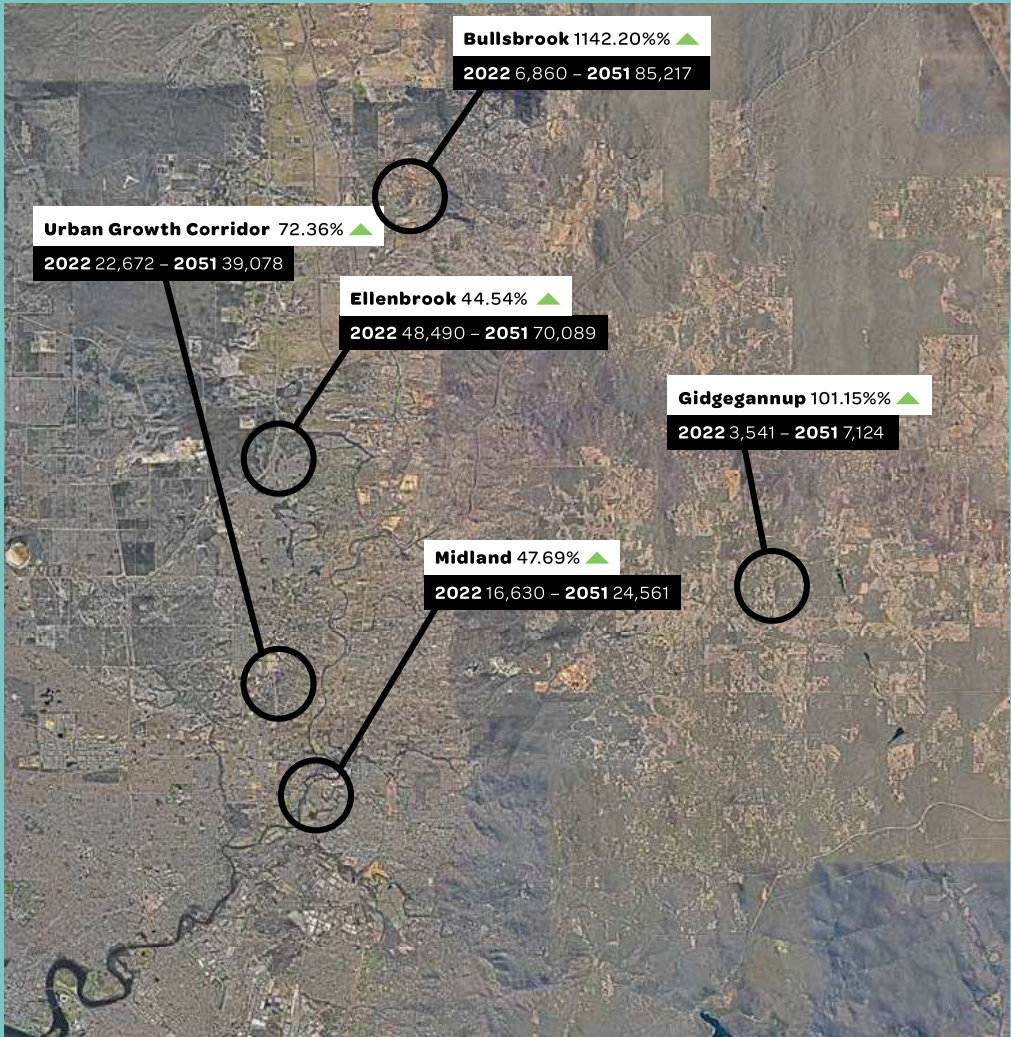
Between 2016 and 2051, Bullsbrook is forecast for the greatest increase in development of new dwellings in the City of Swan. Greenfield housing developments in these three areas will accommodate some 25,744 new homes by 2036. Providing infrastructure for the booming population will be one of the City's highest priorities and greatest challenges in coming decades.



Growth population predictions 2051

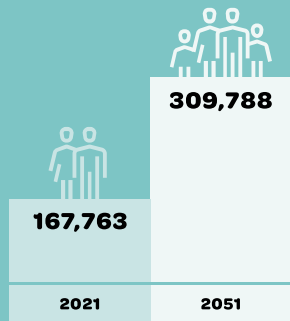
City of Swan 84.66% ▲

2022 - 167,763 - 2051 309,788

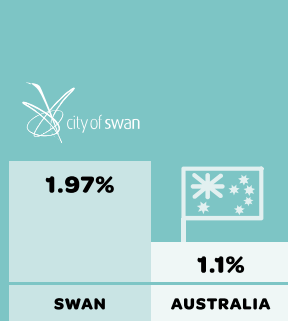


Swan forecast growth 2022 - 2051

Population growth



Swan vs national growth



Homes in Swan

